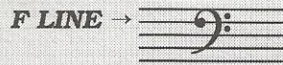


# 21. THE BASS CLEF AND EIGHTH REST

This is the **BASS CLEF**.



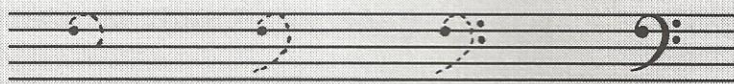
**BASS CLEF (F CLEF)**

The two dots of the **BASS CLEF** mark the **FOURTH LINE** as F.  
Thus, the **BASS CLEF** is also known as the **F CLEF**.

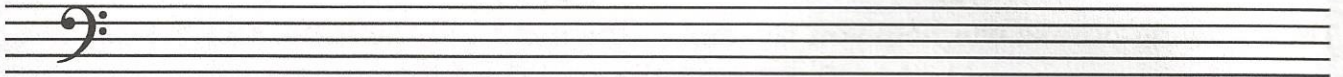
**DIRECTIONS:** Circle the BASS CLEFS.



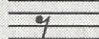
The **BASS CLEF** is drawn in several steps.



**DIRECTIONS:** Draw six BASS CLEFS.

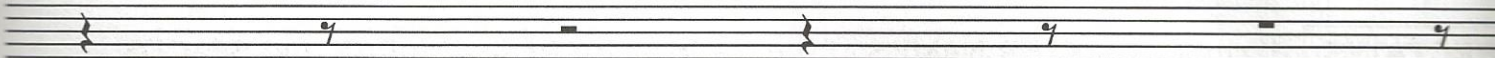


Example

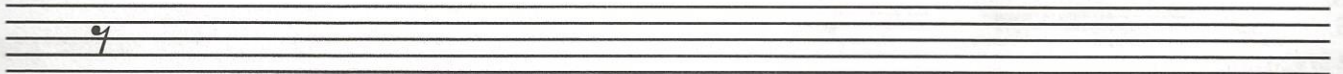
This  is an **EIGHTH REST**.

In  $\frac{4}{4}$   $\frac{3}{4}$   $\frac{2}{4}$  TIME, an **EIGHTH REST**  gets ONE HALF ( $1/2$ ) BEAT.  
An **EIGHTH REST** is COUNTED the same way an EIGHTH NOTE is COUNTED.

**DIRECTIONS:** Circle each REST that gets ONE HALF ( $1/2$ ) BEAT in  $\frac{4}{4}$   $\frac{3}{4}$   $\frac{2}{4}$  time.



**DIRECTIONS:** Draw six EIGHTH RESTS on the STAFF in the same position as the example.



Example

**DIRECTIONS:** ① Add the TIME SIGNATURE. ② Write the COUNTING. **DIVIDE EVERY BEAT.**

**PIZZICATO**



COUNT &

write →

